



# Floor/Ceiling, Nominal Wood Joists

REFERENCE: 0.75" FIRM-FILL® BRAND GYPSUM CONCRETE PLUS 1/4" (6MM) FIRM-FILL® SCM-125

## PRODUCT ASSEMBLY

### 1. Hacker TopCoat®SP

An acrylic-based, film forming surface preparation agent.

### 2. (a) FIRM-FILL®Gypsum Concrete

Has compressive strengths from 1200-2000 psi (ASTM C472).

### (b) FIRM-FILL®2010

Has compressive strengths from 1950-2750 psi (ASTM C472).

### (c) FIRM-FILL®3310

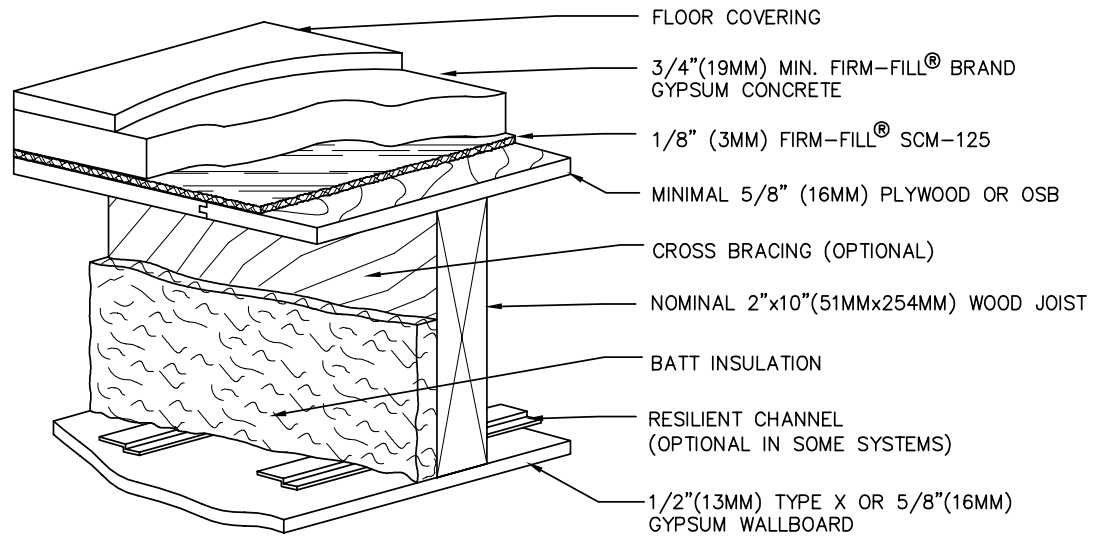
Has compressive strengths from 2000-3350 psi (ASTM C472).

### 3. Hacker Floor Primer

A rewettable latex primer that is diluted 4:1

### Note

Some installation methods and components are not referenced. Please consult all approved resources to ensure a complete assembly.



**When installed over Nominal Wood Joist, 0.75" (19mm) FIRM-FILL® Brand Gypsum Concrete and 1/8" (3mm) FIRM-FILL® SCM-125 achieve excellent fire and sound ratings, while providing a superior crack-resistant surface surface for the installation of finished floor coverings.**

### Nominal Wood Joists

1 hr	w/ Suspended Ceiling	L006,L201, L202, L206, L209, L210, L212
1 hr	Direct Attached Drywall	L501, L503, L507, L512, L519, L522, L523 L537, L557, L588
1 hr	w/ Furring Channel	L515
1 hr	w/ Resilient Channel	L502, L513, L514, L516, L517, L523, L533 L535, L545, L593
1 hr	w/ Resilient Channel & Insulation	L502, L513, L516, L545, L590, L593, L598
1 hr	w/ Kinetics Ceiling Hangers	L583
1 hr	Suspending Drywall	L525, L526
1 hr	Rafter Ceiling	L539, L540, L211
1 hr	w/ Sound Break Drywall	M514
1.5 hrs	w/ Two (2) Layers of Drywall	L510
2 hrs	w/ Two (2) Layers of Drywall	L505, L511, L536
2 hrs	w/ Four (4) Layers of Drywall	L556

**HACKER INDUSTRIES, INC.**  
1600 Newport Center Drive  
Newport Beach, CA 92660

**PHONE**  
(949) 729-3101

**WEB**  
www.hackerindustries.com  
info@hackerindustries.com