

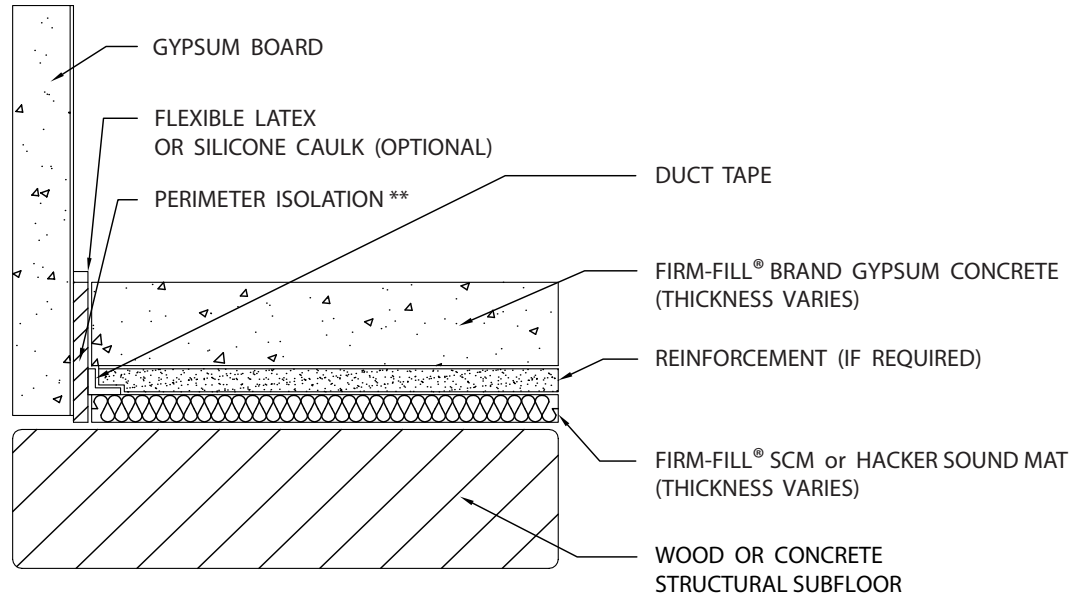


Recommended Minimum Thickness of FIRM-FILL® Brand Gypsum Concrete Over Sound Mat

REFERENCE: TECHNICAL BULLETIN #1001

GENERAL NOTES

1. Perimeter isolation must be used on all systems.
2. Subfloor needs to be structurally sound (L/360), clean, and free of all contaminants.
3. When required, install bulkheads in areas where sound mat stops and meets the carpet and pad areas.
4. Install sound mat as per manufacturer's recommendations.
5. Protect sound mat from all trade traffic prior to installation of the FIRM-FILL® brand Gypsum Concrete.
6. Do not install sound mat prior to the installation of drywall. Protect all areas from any wheeled loads, especially in hallways.
7. *Requires Reinforcement
8. **Perimeter Isolation is a closed cell foam placed at walls. Thickness as specified by an acoustical engineer in accordance with a fire-rated design.
9. For acoustical mats not listed please contact Hacker Industries, Inc.



SOUND MAT DEPTH CHART

	Mat Thickness	FIRM-FILL® Brand Gypsum Concrete Thickness
FIRM-FILL® SCM 125	1/8" (3mm)	3/4" (19mm)
FIRM-FILL® SCM 250	1/4" (6mm)	1" (25mm)
FIRM-FILL® SCM 400	3/8" (10mm)	1-1/4" (32mm)
FIRM-FILL® SCM 750	3/4" (19mm)	1-1/2" (38mm)*
Hacker Sound Mat I	.08" (2mm)	3/4" (19mm)
Hacker Sound Mat II	1/4" (6mm)	1-1/4" (32mm)

Note

Some installation methods and components are not referenced. Please consult all approved resources to ensure a complete assembly.